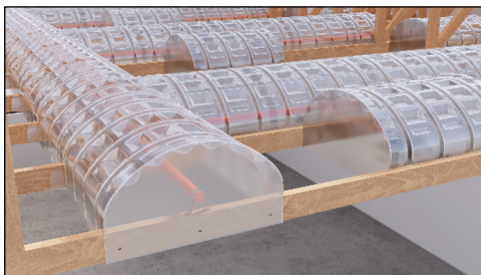
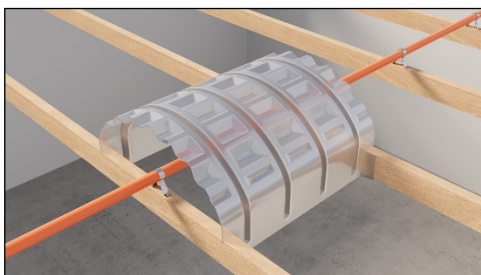
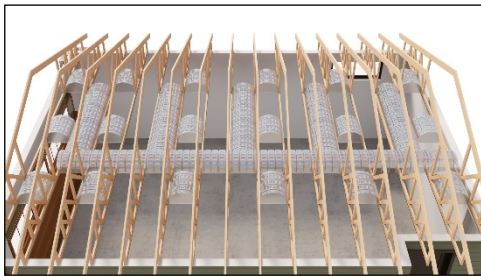
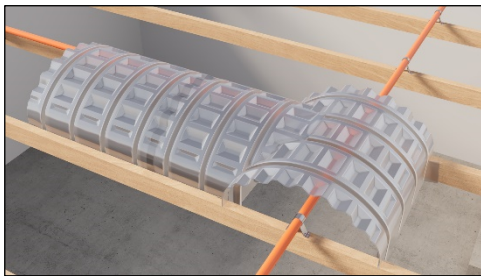


Rafter Runners™ & End Cap Product Data Sheet



Rafter Runners are the latest technology in fire sprinkler and ceiling utility tenting. Rafter Runners provide a complete, prefabricated system to make the tenting process seamless and in-turn, significantly reducing hard costs and installation timeframes. You can save up to 30% on hard costs and cut your installation timelines by at least 50%. They are preferred by Building Departments (AHJs) due to simplified inspections associated with a simple, high quality, and prefabricated system.

Designed to protect your fire sprinkler systems, Rafter Runners create a thermal break that prevents pipes from freezing and bursting. Engineered for durability and ease of installation, our product ensures compliance with new, and current, building codes while reducing long-term maintenance costs. Rafter Runners can also be used to tent nearly any ceiling utility and to create wire chases to be able to run new wiring in the future, ultimately future-proofing your building.

Technical Specifications:

- **Span Coverage:** Tents a 24" span in seconds.
- **Installation:** No special skills required; minimal tools needed.
- **Fastening Compatibility:** Compatible with various fasteners.
- **Configurations:** Offers endless configuration possibilities.
- **Weight:** Lightweight at 1.7 lbs. per Runner and 1 lb. per end cap.
- **Flexibility & Durability:** Moderate flexibility for tight spaces, and very durable.
- **Handling:** Interlocking design for carrying 25 Runners at a time; hoisting capability via drilled hole; easily cut with standard shears.
- **Clearance:** Designed to clear sprinkler offset brackets and most utilities.
- **Testing:** Rated up to 15psf of insulation and 200°F.
- **Manufacturing:** Made in the USA and is fully patented.
- **Availability:** Available now with site delivery available.

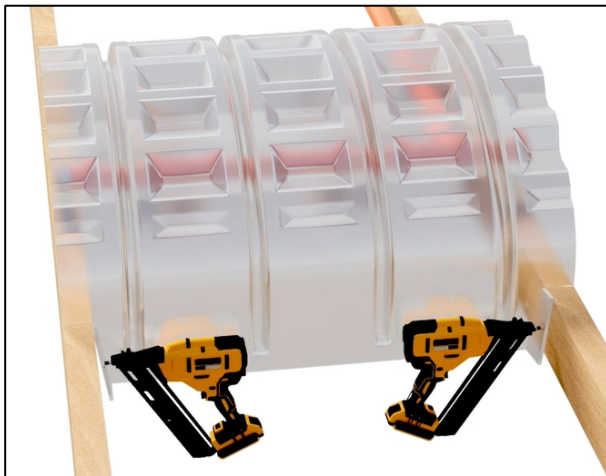
General Notes:

Rafter Runners and the matching end caps are very lightweight (1.7lbs. & 1lb. respectively) and can be easily carried in bundles of 25. Both can be installed with staples, screws, or nails (T50 staples with min. 9/16" legs or bigger are recommended). It is recommended that 2-3 fasteners are installed in each of the mounting tabs or 4-6 fasteners on each side of a Runner in a parallel-to-rafter installation.

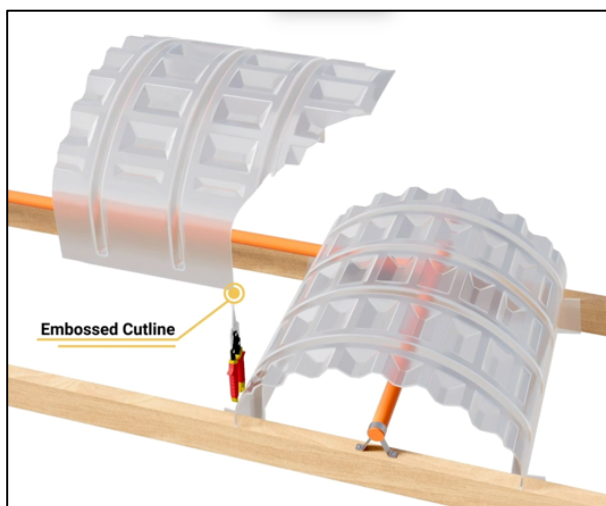
A vast array of intersections can be made with Rafter Runners by cutting a Runner along the embossed intersection cutline. Once cut, the Runner will intersect with a perpendicular Runner thereby creating a 90 degree, 3-way, and 4-way intersections. Rafter Runners should be installed after the fire sprinkler system rough-in installation is complete, and before insulation commences.

Installation Instructions & Recommendations:

~ Visit rafterrunners.com for detailed installation videos ~



Perpendicular-to-Rafter Installation: Fold the (4) corner mounting tabs outward along the embossed fold lines. Place the Rafter Runner between the joists centered over the pipe/utility. Confirm the first Rafter Runner vertical walls are installed at 22.5" wide. Install 2-3 fasteners in each of the mounting tabs. Place the next Rafter Runner in the adjacent joist space and confirm the 1.5" overlap of the two Runners is maintained. Install the tab fasteners. Repeat as needed.



Creating an Intersection Runner: Each Rafter Runner has an embossed cutline on each end. Cut the Runner along the cutline and install the cut Runner with the arch in contact with the perpendicular Runner. Notch the Runners around any utility mounting brackets as needed. Align the Runner with the bottom of the joists and install 4-6 fasteners on each side of the Runner (NOTE: do not install any fasteners in the 1.5" overlap area until the adjacent Runner is installed). Repeat as needed.



Parallel-to-Rafter Installation: Place the Rafter Runner between the joists and confirm the 1.5" overlap of the two Runners is maintained. Notch the Runner around any utility mounting brackets as needed. Align the Runner with the bottom of the joists and install 4-6 fasteners on each side of the Runner (NOTE: do not install any fasteners in the 1.5" overlap area until the adjacent Runner is installed). Repeat as needed.



End Cap Installation: Each end cap will work for closing off the end of a tenting run, regardless of parallel or perpendicular-to-joist Runners. For parallel-to-joist Rafter Runners, simply slide the end cap over the end of the Runner ensuring the flange is installed between the Runner vertical walls and the joists. Install 2-3 fasteners on each side through the wall of the Runner and through the flange of the end cap to hold it in place. For perpendicular-to-joist Rafter Runners, notch both sides of the end cap's vertical flange at the embossed cutline.

Place the end cap over the end of the Rafter Runner and install 3-4 fasteners through the end cap face into the joist.

Delivery, Storage, and Handling:

Rafter Runners should be delivered and stored indoors in preparation for installation. Rafter Runners are designed to interlock so bundles of 20-25 can be carried at one time. Minor burring may be present on the edges of Rafter Runners so proper PPE should be worn (according to jobsite requirements) when handling/installing.

Sequencing:

Rafter Runners are designed to be installed after the fire sprinkler rough-in is complete, and prior to insulation installation.



• Email Info@RafterRunners.com to order •



Environmental Conditions:

Rafter Runners can be stored and installed in most weather conditions/temperatures; however, the mounting tabs may snap off or fracture during fastener installation if the Rafter Runners are extremely cold (~15-20° Fahrenheit). If snapping/fracturing occurs, warm the Rafter Runners and install at a warmer temperature.